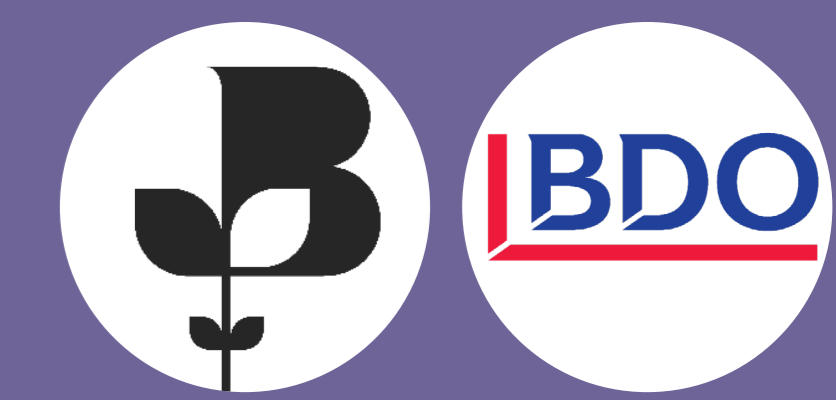


Quarterly Economic Survey

Q3 2019



northernirelandchamber.com

About

The Northern Ireland Chamber of Commerce and Industry Quarterly Economic Survey (QES), in partnership with BDO is the largest survey of business opinion conducted in Northern Ireland and closely watched by policymakers such as the NI Executive; Treasury and Bank of England. Businesses are questioned on a wide range of issues, including: home sales and orders, export sales and orders, employment prospects, investment, recruitment difficulties, cash flow and price pressures.

Economy Watch

- Very weak performance** by NI economy with many indicators negative and at an 8-year low
- A lot of **lost ground** in NI's post recession recovery
- NI's regional position **significantly eroded**, ranking bottom of all UK regions for most indicators
- Businesses** are pulling back on investment
- Cash flow position** a persistent problem



Brexit Watch

2 in 3

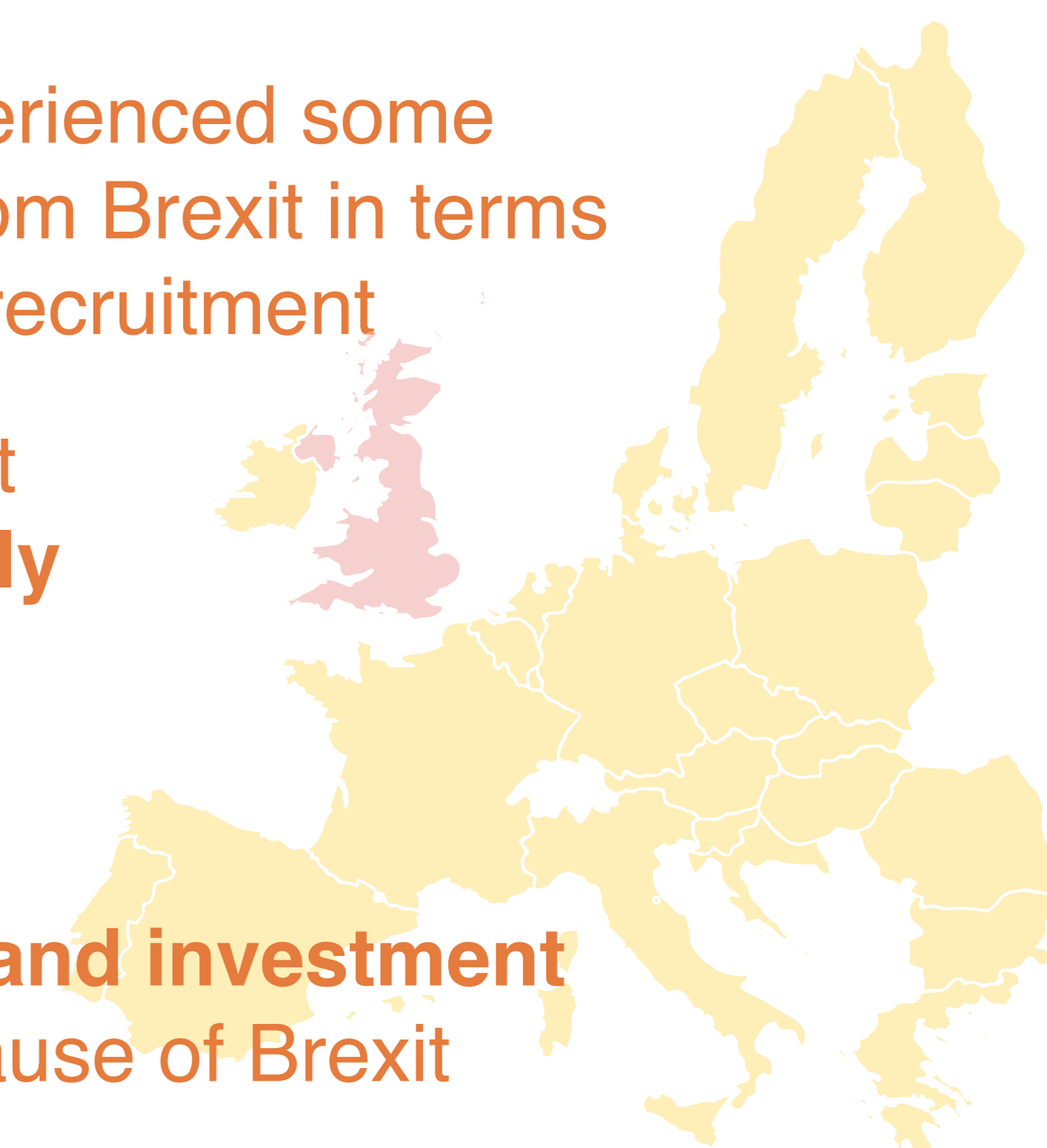
members have experienced some **negative impact** from Brexit in terms of sales, costs and recruitment

50%

of members say that Brexit has **negatively impacted** on business turnover

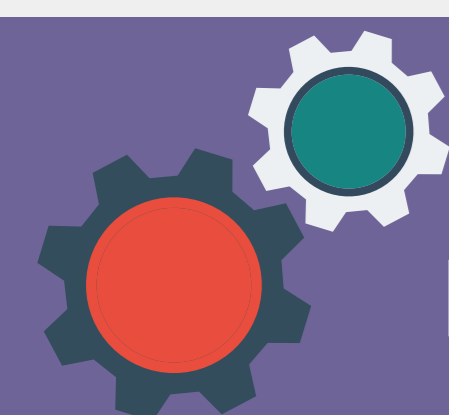
50%

are putting **growth and investment plans on hold** because of Brexit

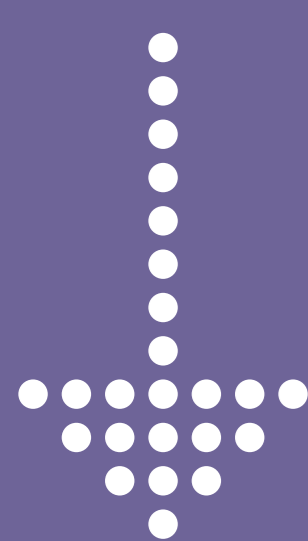


Sectors

Manufacturing



Majority of key **manufacturing balances negative** suggesting some sense of contraction in the sector



Manufacturing's trade performance worst in a decade



Businesses are still struggling to get staff

82% are facing recruitment difficulties



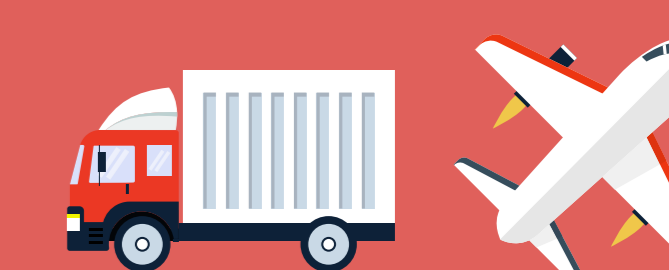
Services



Businesses are still recruiting and some confidence remains in sales. **However...**



Domestic sales and export balances are **all negative** in Q3



More service sector businesses are experiencing cash flow deterioration



78% of service sector members are still finding it difficult to recruit the right people

Special Focus: Economic and Political Stability

Business leaders express serious concerns over economic and political stability in NI



67% are extremely/very concerned about the impact of the NI political situation on their business



77% of members believe a recession is likely in NI in the next **6-12** months